

DigiLED DMX CA

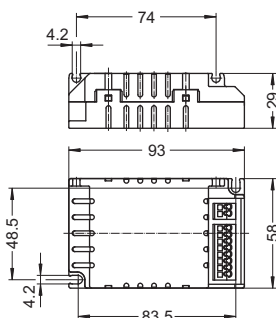
Digital colour controls via DMX light management

$t_c = 60\text{ }^\circ\text{C max.}$

Max. current per control channel: 1.25 A

Type: WU-ST-003-Digi-DMX-CA

Ref. No.: 186153



DigiLED DMX CA

DigiLED IR CA

Colour adjustment by a portable remote control

Call up of pre-adjusted setting possible

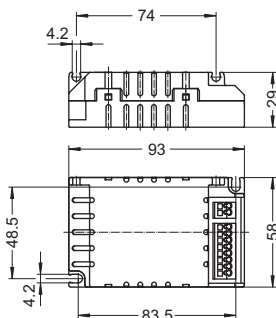
Data transfer via infra-red

$t_c = 55\text{ }^\circ\text{C max.}$

Max. current per control channel: 1.25 A

Type: WU-ST-005-Digi-IR-CA

Ref. No.: 186154



DigiLED IR CA

DigiLED RF CA

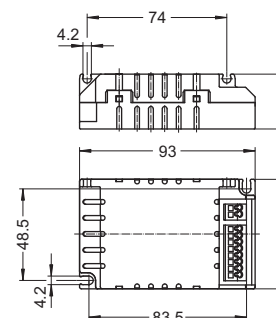
Easy operation possible via radio frequency (RF) and a keypad with 7 buttons. The operation via radio frequency (RF) enables a flexible installation. Optical "line of sight" or cables are not necessary due to RF operation.

Ambient temperature t_a : $-20\text{ to }45\text{ }^\circ\text{C}$

Max. current per control channel: 1.25 A

Type: WU-ST-012-DigiLED-RF CA

Ref. No.: 186181



DigiLED RF CA

Walltransmitter

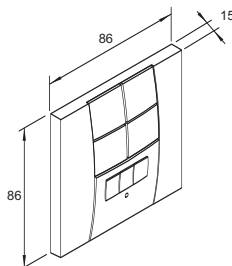
Required to activate the programs in the DigiLED RF

Dimensions (LxWxH): 86x86x15 mm

Colour: white

Type: WU-ST-009-Walltransmitter

Ref. No.: 536843



Walltransmitter

DigiLED Push CA

Colour adjustment by separate push button

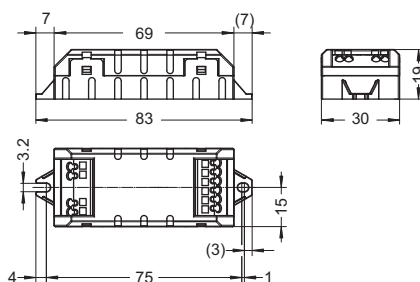
Permits retrieval of pre-set programs

$t_c = 55\text{ }^\circ\text{C max.}$

Max. current per control channel: 1.25 A

Type: WU-ST-006-DigiLED-Push CA

Ref. No.: 186144



DigiLED Push CA