



**LEDVANCE**

LEDVANCE.COM



Success  
the easy  
way



**LED luminaires from LEDVANCE**

Redefining the standard to advance light with and for you. Now extended.

The standard. Redefined.  
LED luminaires from LEDVANCE.

Update June 2017

**LEDVANCE**  
OSRAM



# LEDVANCE: Advancing Light

LEDVANCE is your new and trusted partner for OSRAM general lighting products and the new LEDVANCE luminaire portfolio – worldwide and with teams of experts near you.

For us, “Advancing Light” is more than a promise – it is an attitude. The company is an offspring of OSRAM, combining traditional general illumination with modern, ground-breaking lighting technologies. LEDVANCE is built on trusted, long-standing customer relationships and a powerful distribution network offering excellent reach and market access around the globe. Based on our in-depth understanding of the general illumination market, trending technologies and changing needs, we support the specific and individual demands of both direct and indirect customers.

Get to know more about LEDVANCE the company, our comprehensive portfolio of OSRAM general lighting products and our recently updated range of LED luminaires from LEDVANCE at [ledvance.com](https://www.ledvance.com)

Let's jointly redefine the role of light.



# Content

Overview	04	Surface Circular	10
Highlights	05	Damp Proof	11
Downlight	06	High Bay	12
Spot	07	Floodlight	13
Linear	08	DALI	14
Panel	09	Vertical Application Management	15

## The LEDVANCE eCatalog – all data and information you need quickly at hand

Technical data sheets, product and installation videos, planning and calculation tools, and much more: All important and valuable further data and information on the LEDVANCE luminaires are provided in the electronic catalog (eCatalog) on [ledvance.com](http://ledvance.com) and can be downloaded where necessary or useful.

The screenshot displays the LEDVANCE eCatalog interface for the 'LEDVANCE SPOT LED FIREPROOF' product. The page includes a navigation menu, breadcrumb trail, product image, technical specifications, and a sidebar with additional resources. Annotations highlight key features and actions:

- Choose your product on EAN level:** Points to the product selection tabs (e.g., '66 7 W 3000 K IP65 FP WT').
- Download the technical data sheet as a PDF for maximum product information:** Points to the 'Product Data sheet' download icon.
- Quick link to product installation videos, LEDVANCE tools and other additional information and services:** Points to the sidebar containing 'Product video: Ledvance Spot LED Fireproof', 'Installation video: Ledvance Spot LED Fireproof', 'Product knowledge', 'LEDVANCE Tools', and 'Product knowledge'.
- Click the download section to access all available downloads incl. light planning files, user instructions and certificates:** Points to the 'Downloads' section in the bottom navigation menu.

# LED luminaires from LEDVANCE

## The standard. Redefined.

Straightforward, efficient and easy-to-install products with proven quality and an optimum price/performance ratio, perfectly matched to your everyday requirements. That's precisely what we at LEDVANCE understand by advancing light. And that's precisely why we have developed the new LED luminaires from LEDVANCE – to redefine the standard.



Choose LED luminaires from LEDVANCE and give your business a boost. Impress your customers and make your own work a lot easier.

LED luminaires from LEDVANCE are the no-frills choice for when you simply need the right light for common applications. The luminaires have all the necessary features and functions and offer precisely what they have been developed for – in short: success the easy way!

Now you get even more bestsellers: After the successful market launch of the LEDVANCE LED luminaires, we are now expanding our bestseller portfolio with additional LED luminaires. Again perfectly matched to your and your customers' requirements!

The LED luminaires are equipped exclusively with high-quality LED modules in the highest energy efficiency classes (A, A+ and A++).

For all LED luminaires from LEDVANCE:



<sup>1</sup> Refer to [www.ledvance.com/guarantee](http://www.ledvance.com/guarantee) for precise conditions

# The new highlights

Page 7

## Spot DIM

- Phase-cut<sup>1</sup> dimmable spotlights
- Fire-resistant<sup>2</sup> and IP65 versions available
- Available with white or brushed silver rings



Page 9

## Panel 1200 & new accessories

- 1,200 × 300 version for suspended ceiling grids
- Mounting kits for surface or pendant installation
- Mounting clips for ceiling cut-out



Page 13

## Floodlight Asymmetrical

- Asymmetrical light distribution
- Compact design: weight and size optimized
- Common LEDVANCE Floodlight design



Page 14

## DALI DIM products

- Spots, Downlights and Panels with DALI interface
- OSRAM OTi DALI ECG included
- Plug & Play connector to luminaire

<sup>1</sup> Dimmable via leading edge and trailing edge

<sup>2</sup> Up to 90 minutes, tested in accordance with EN 1365-2:2014 "fire resistance tests for loadbearing elements - Part 2: Floors and roofs", BS476-20:1987 and BS476-21:1987

Page 13

## Floodlight Sensor



- Motion and daylight sensor
- Sensor is protected IP65
- Same LEDVANCE Floodlight design

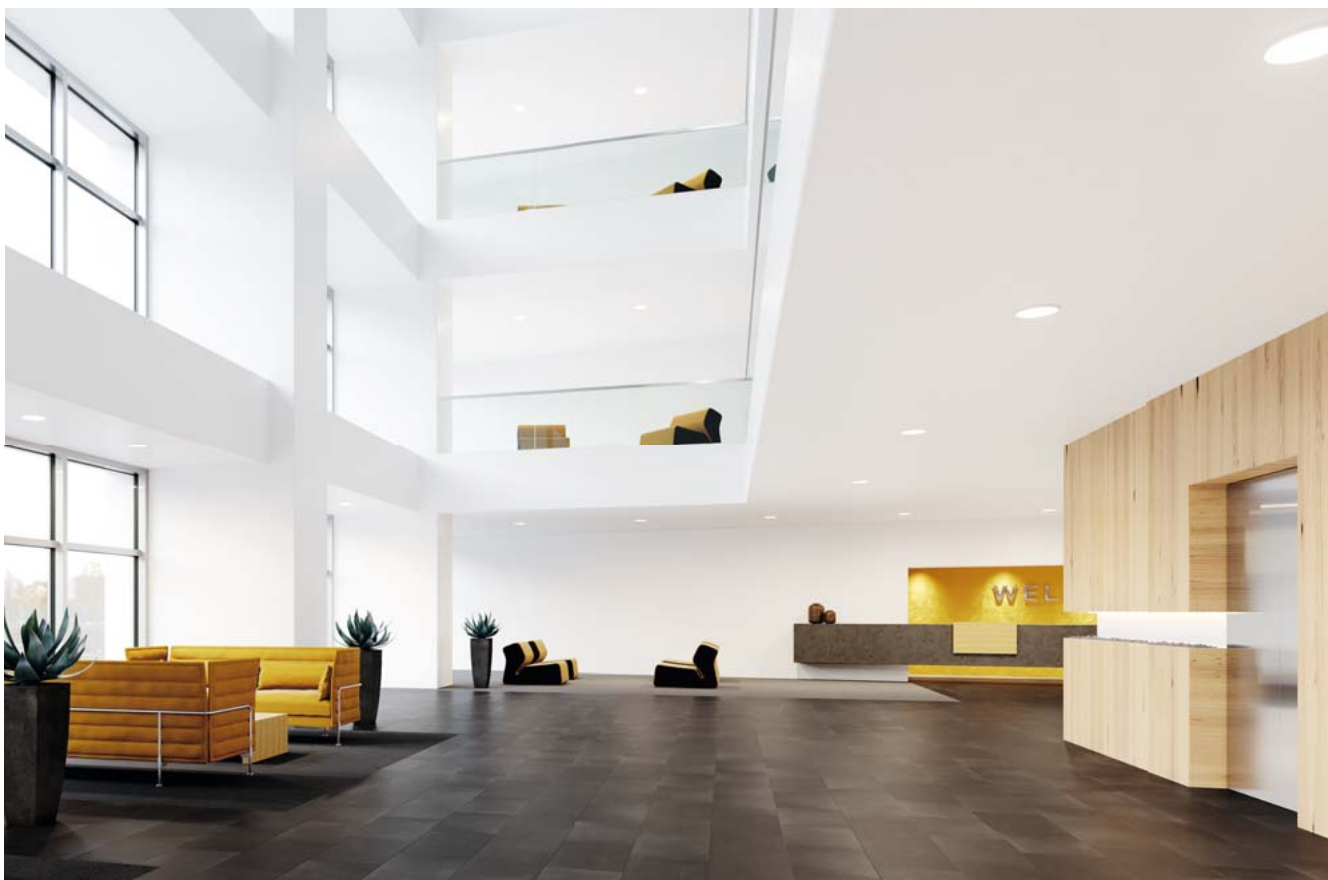
# Downlight



## Downlight

SAVE 60%<sup>1</sup> ENERGY

Product name	GTIN (EAN)	Replacement for <sup>2</sup>	lm	lm/W		L70 <sup>3</sup>	L80 <sup>4</sup>	Dimensions Ø x H [mm]	Cut out [mm]	
Downlight LED 14W/3000K 230V IP20	4058075000001	2 x 18W	1,310	90	95°	50,000 h	40,000 h	160 x 60	150	01
Downlight LED 14W/4000K 230V IP20	4058075000025	2 x 18W	1,360	95	95°	50,000 h	40,000 h	160 x 60	150	01
Downlight LED 14W/6500K 230V IP20	4058075000049	2 x 18W	1,360	95	95°	50,000 h	40,000 h	160 x 60	150	01
Downlight LED 25W/3000K 230V IP20	4058075000063	2 x 26W	2,220	90	100°	50,000 h	40,000 h	220 x 67	200	01
Downlight LED 25W/4000K 230V IP20	4058075000087	2 x 26W	2,340	95	100°	50,000 h	40,000 h	220 x 67	200	01
Downlight LED 25W/6500K 230V IP20	4058075000100	2 x 26W	2,440	100	100°	50,000 h	40,000 h	220 x 67	200	01
<b>NEW</b> Downlight LED 35W/3000K 230V IP20	4058075016323	2 x 42W	3,150	90	100°	50,000 h	40,000 h	220 x 67	200	01
<b>NEW</b> Downlight LED 35W/4000K 230V IP20	4058075016347	2 x 42W	3,325	95	100°	50,000 h	40,000 h	220 x 67	200	01
<b>NEW</b> Downlight LED 35W/6500K 230V IP20	4058075016361	2 x 42W	3,500	100	100°	50,000 h	40,000 h	220 x 67	200	01



<sup>1</sup> Energy savings up to XX%. Compared to luminaire with traditional technologies. The possible power loss of traditional control gear solutions is part of the calculation of the anticipated energy savings | <sup>2</sup> Replacement for usually used traditional equivalent | <sup>3</sup> t<sub>90</sub>: L70/B50 | <sup>4</sup> t<sub>80</sub>: L80/B50 | <sup>5</sup> Refer to [www.ledvance.com/guarantee](http://www.ledvance.com/guarantee) for precise conditions

# Spot



## Spot

SAVE 90%<sup>1</sup> ENERGY

Product name	GTIN (EAN)	Replace-ment for <sup>2</sup>	lm	lm/W		L70 <sup>3</sup>	L80 <sup>4</sup>	Dimensions Ø x H [mm]	Cut out [mm]		No. Graphic <sup>6</sup>
<b>Spot adjust (adjustable ± 20°)</b>											
Spot LED adjust 4.5W/3000K 230V IP20	4058075000124	35W	360	80	36°	50,000 h	40,000 h	80 x 36	68		01
Spot LED adjust 6.5W/3000K 230V IP20	4058075000148	50W	550	85	36°	50,000 h	40,000 h	80 x 36	68		01
Spot LED adjust 8W/3000K 230V IP20	4058075000162	75W	660	85	36°	50,000 h	40,000 h	90 x 47	83		01
Spot LED adjust 8W/4000K 230V IP20	4058075000186	75W	720	90	36°	50,000 h	40,000 h	90 x 47	83		01
<b>Spot fix DIM IP44</b>											
<b>NEW</b> Spot LED fix 8W/3000K WT DIM IP44	4058075811256	75W	620	75	36°	50,000 h	40,000 h	81 x 51	68	✓	02
<b>NEW</b> Spot LED fix 8W/4000K WT DIM IP44	4058075811270	75W	670	80	36°	50,000 h	40,000 h	81 x 51	68	✓	02
<b>NEW</b> Spot LED fix 8W/3000K SI DIM IP44	4058075811294	75W	620	75	36°	50,000 h	40,000 h	81 x 51	68	✓	03
<b>NEW</b> Spot LED fix 8W/4000K SI DIM IP44	4058075811317	75W	670	80	36°	50,000 h	40,000 h	81 x 51	68	✓	03
<b>Spot FP IP65 (fire-resistant up to 90 minutes)<sup>7</sup></b>											
Spot-FP LED fix 7W/3000K 230V IP65	4058075000209	50W	530	75	38°	50,000 h	40,000 h	90 x 72	68		04
<b>NEW</b> Spot-FP LED fix 8W/3000K WT DIM IP65	4058075811171	75W	620	75	36°	50,000 h	40,000 h	81 x 51	68	✓	02
<b>NEW</b> Spot-FP LED fix 8W/4000K WT DIM IP65	4058075811195	75W	670	80	36°	50,000 h	40,000 h	81 x 51	68	✓	02
<b>NEW</b> Spot-FP LED fix 8W/3000K SI DIM IP65	4058075811218	75W	620	75	36°	50,000 h	40,000 h	81 x 51	68	✓	03
<b>NEW</b> Spot-FP LED fix 8W/4000K SI DIM IP65	4058075811232	75W	670	80	36°	50,000 h	40,000 h	81 x 51	68	✓	03
<b>Spot Dark Light IP44 (70° cut-off angle)</b>											
Spot-DK LED fix 7W/3000K 230V IP44	4058075000223	50W	580	85	36°	50,000 h	40,000 h	70 x 58	63		05
<b>Spot Kit LED (incl. OSRAM GU10 lamps)</b>											
<b>NEW</b> Spot Kit LED PAR16 4.7W 3000K non DIM	4058075800984	50W	380	80	36°	15,000 h	-	85 x 100	75		06
<b>NEW</b> Spot Kit LED PAR16 4.7W 4000K non DIM	4058075801004	50W	420	75	36°	15,000 h	-	85 x 100	75		06
<b>NEW</b> Spot Kit LED PAR16 5.5W 3000K DIM	4058075800908	50W	380	80	36°	25,000 h	-	85 x 100	75	✓	06
<b>NEW</b> Spot Kit LED PAR16 5.5W 4000K DIM	4058075800946	50W	420	75	36°	25,000 h	-	85 x 100	75	✓	06



<sup>1</sup> Energy savings up to XX%. Compared to luminaire with traditional technologies. The possible power loss of traditional control gear solutions is part of the calculation of the anticipated energy savings | <sup>2</sup> Replacement for usually used traditional equivalent | <sup>3</sup> t<sub>90</sub>: L70/B50 | <sup>4</sup> t<sub>80</sub>: L80/B50 | <sup>5</sup> Refer to [www.ledvance.com/guarantee](http://www.ledvance.com/guarantee) for precise conditions | <sup>6</sup> Phase-Cut | <sup>7</sup> Up to 90 minutes, tested in accordance with EN 1365-2:2014 "fire resistance tests for loadbearing elements - Part 2: Floors and roofs", BS476-20:1987 and BS476-21:1987

# Linear



## Linear (incl. mounting accessories and 1.3m connection cable with Europlug)

SAVE 80%<sup>1</sup> ENERGY

Product name	GTIN (EAN)	Replacement for <sup>2</sup>	lm	lm/W	°	L70 <sup>3</sup>	L80 <sup>4</sup>	Dimensions L x W x H [mm]	No. Graphic
<b>Linear (with switch)</b>									
Linear LED 300 4W/3000K 230V IP20	4058075000247	1 x 9W	400	100	140°	50,000 h	40,000 h	313 x 28 x 36	01
Linear LED 300 4W/4000K 230V IP20	4058075000261	1 x 9W	450	110	140°	50,000 h	40,000 h	313 x 28 x 36	01
Linear LED 600 8W/3000K 230V IP20	4058075000285	1 x 18W	800	100	140°	50,000 h	40,000 h	573 x 28 x 36	01
Linear LED 600 8W/4000K 230V IP20	4058075000308	1 x 18W	800	100	140°	50,000 h	40,000 h	573 x 28 x 36	01
Linear LED 1200 14W/3000K 230V IP20	4058075000322	1 x 36W	1,400	100	140°	50,000 h	40,000 h	1,173 x 28 x 36	01
Linear LED 1200 14W/4000K 230V IP20	4058075000346	1 x 36W	1,500	100	140°	50,000 h	40,000 h	1,173 x 28 x 36	01
<b>Linear Power (without switch)</b>									
Linear LED 600 Power 10W/3000K IP20	4058075000360	2 x 18W	1,000	100	140°	50,000 h	40,000 h	573 x 24 x 36	02
Linear LED 600 Power 10W/4000K IP20	4058075000384	2 x 18W	1,000	100	140°	50,000 h	40,000 h	573 x 24 x 36	02
Linear LED 1200 Power 20W/3000K IP20	4058075000407	2 x 36W	2,000	100	140°	50,000 h	40,000 h	1,173 x 24 x 36	02
Linear LED 1200 Power 20W/4000K IP20	4058075000421	2 x 36W	2,000	100	140°	50,000 h	40,000 h	1,173 x 24 x 36	02
Linear LED 1500 Power 25W/3000K IP20	4058075000445	2 x 58W	2,500	100	140°	50,000 h	40,000 h	1,473 x 24 x 36	02
Linear LED 1500 Power 25W/4000K IP20	4058075000469	2 x 58W	2,500	100	140°	50,000 h	40,000 h	1,473 x 24 x 36	02



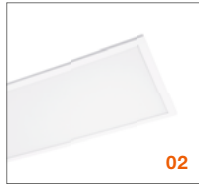
<sup>1</sup> Energy savings up to XX%. Compared to luminaire with traditional technologies. The possible power loss of traditional control gear solutions is part of the calculation of the anticipated energy savings | <sup>2</sup> Replacement for usually used traditional equivalent | <sup>3</sup> t<sub>90</sub>: L70/B50 | <sup>4</sup> t<sub>80</sub>: L80/B50 | <sup>5</sup> Refer to [www.ledvance.com/guarantee](http://www.ledvance.com/guarantee) for precise conditions



# Panel



5

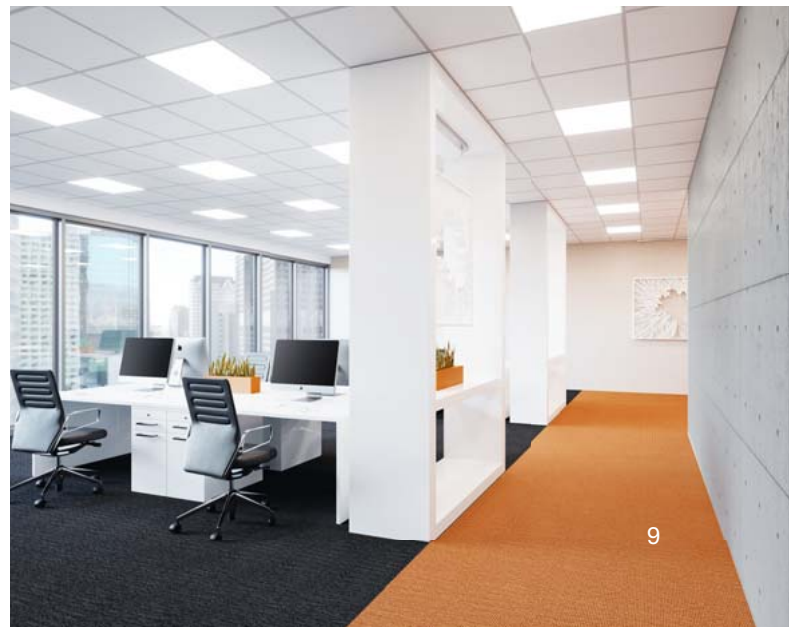


## Panel

SAVE 50%<sup>1</sup> ENERGY

Product name	GTIN (EAN)	Replace- ment for <sup>2</sup>	lm	lm/W		L70 <sup>3</sup>	L80 <sup>4</sup>	Dimensions L x W x H [mm]	
<b>Panel 600 x 600</b>									
Panel LED 600 30W/3000K 230V	4058075000483	3 x 18W/3 x 14W	3,000	100	120°	50,000 h	40,000 h	595 x 595 x 10.5	01
Panel LED 600 30W/4000K 230V	4058075000506	3 x 18W/3 x 14W	3,000	100	120°	50,000 h	40,000 h	595 x 595 x 10.5	01
Panel LED 600 30W/6500K 230V	4058075000520	3 x 18W/3 x 14W	3,000	100	120°	50,000 h	40,000 h	595 x 595 x 10.5	01
Panel LED 600 40W/3000K 230V	4058075000544	4 x 18W/4 x 14W	4,000	100	120°	50,000 h	40,000 h	595 x 595 x 10.5	01
Panel LED 600 40W/4000K 230V	4058075000568	4 x 18W/4 x 14W	4,000	100	120°	50,000 h	40,000 h	595 x 595 x 10.5	01
Panel LED 600 40W/6500K 230V	4058075000582	4 x 18W/4 x 14W	4,000	100	120°	50,000 h	40,000 h	595 x 595 x 10.5	01
Panel LED 600 33W/3000K 230V UGR<19	4058075000605	4 x 18W/4 x 14W	3,100	95	90°	50,000 h	40,000 h	595 x 595 x 10.5	01
Panel LED 600 33W/4000K 230V UGR<19	4058075000629	4 x 18W/4 x 14W	3,600	110	90°	50,000 h	40,000 h	595 x 595 x 10.5	01
<b>Panel 625 x 625</b>									
Panel LED 625 30W/3000K 230V	4058075000643	3 x 18W/3 x 14W	3,000	100	120°	50,000 h	40,000 h	620 x 620 x 10.5	01
Panel LED 625 30W/4000K 230V	4058075000667	3 x 18W/3 x 14W	3,000	100	120°	50,000 h	40,000 h	620 x 620 x 10.5	01
Panel LED 625 40W/3000K 230V	4058075000681	4 x 18W/4 x 14W	4,000	100	120°	50,000 h	40,000 h	620 x 620 x 10.5	01
Panel LED 625 40W/4000K 230V	4058075000704	4 x 18W/4 x 14W	4,000	100	120°	50,000 h	40,000 h	620 x 620 x 10.5	01
<b>NEW</b> Panel LED 625 33W/3000K 230V UGR<19	4058075811065	4 x 18W/4 x 14W	3,100	95	90°	50,000 h	40,000 h	620 x 620 x 10.5	01
Panel LED 625 33W/4000K 230V UGR<19	4058075000728	4 x 18W/4 x 14W	3,600	110	90°	50,000 h	40,000 h	620 x 620 x 10.5	01
<b>Panel 1200 x 300</b>									
<b>NEW</b> Panel LED 1200 40W/3000K 230V	4058075807327	2 x 36W/2 x 28W	4,000	100	120°	50,000 h	40,000 h	1,195 x 295 x 10.5	02
<b>NEW</b> Panel LED 1200 40W/4000K 230V	4058075807303	2 x 36W/2 x 28W	4,000	100	120°	50,000 h	40,000 h	1,195 x 295 x 10.5	02
<b>NEW</b> Panel LED 1200 33W/3000K 230V UGR<19	4058075807266	2 x 36W/2 x 28W	3,100	95	90°	50,000 h	40,000 h	1,195 x 295 x 10.5	02
<b>NEW</b> Panel LED 1200 33W/4000K 230V UGR<19	4058075807280	2 x 36W/2 x 28W	3,300	100	90°	50,000 h	40,000 h	1,195 x 295 x 10.5	02
<b>Panel Accessories</b>									
<b>NEW</b> Panel 600 Surface Mount Kit	4058075813816							600.5 x 600.5 x 56	03
<b>NEW</b> Panel 625 Surface Mount Kit	4058075813830							625.5 x 625.5 x 56	03
<b>NEW</b> Panel 1200 Surface Mount Kit	4058075813854							1,200.5 x 300.5 x 56	04
<b>NEW</b> Panel Mounting Clips 2x4	4058075811089							45 x 35 x 30	05
<b>NEW</b> Panel 600/625 Suspension Kit	4058075800106							3,000	06
<b>NEW</b> Panel 1200 Suspension Kit	4058075027817							3,000	06

<sup>1</sup> Energy savings up to XX%. Compared to luminaire with traditional technologies. The possible power loss of traditional control gear solutions is part of the calculation of the anticipated energy savings | <sup>2</sup> Replacement for usually used traditional equivalent | <sup>3</sup> t<sub>90</sub>: L70/B50 | <sup>4</sup> t<sub>80</sub>: L80/B50 | <sup>5</sup> Refer to www.ledvance.com/guarantee for precise conditions



# Surface Circular



## Surface Circular

SAVE **55%<sup>1</sup>** ENERGY

Product name	GTIN (EAN)	Replacement for <sup>2</sup>	lm	lm/W		L70 <sup>3</sup>	L80 <sup>4</sup>	Dimensions Ø x H [mm]	Sensor <sup>5</sup>	No. Graphic
Surface-C LED 350 18W/3000K IP44	4058075000742	2 x 18W	1,440	80	120°	50,000 h	30,000 h	350 x 115		01
Surface-C LED 350 18W/4000K IP44	4058075000766	2 x 18W	1,440	80	120°	50,000 h	30,000 h	350 x 115		01
Surface-C LED 400 24W/3000K IP44	4058075000780	2 x 26W	1,920	80	120°	50,000 h	30,000 h	400 x 120		01
Surface-C LED 400 24W/4000K IP44	4058075000803	2 x 26W	1,920	80	120°	50,000 h	30,000 h	400 x 120		01
Surface-C LED 400 24W/3000K S IP44	4058075000827	2 x 26W	1,920	80	120°	50,000 h	30,000 h	400 x 120	✓	01
Surface-C LED 400 24W/4000K S IP44	4058075000841	2 x 26W	1,920	80	120°	50,000 h	30,000 h	400 x 120	✓	01

## How to configure the microwave sensor of LEDVANCE Surface Circular

**Detection Area**

1	2	3	
ON	ON	ON	100 %
—	ON	ON	75 %
ON	—	ON	50 %
—	—	ON	25 %
—	—	—	10 %

**Hold Time**

4	5	6	
ON	ON	ON	5 s
—	ON	ON	30 s
ON	—	ON	90 s
—	—	ON	3 min
ON	ON	—	20 min
—	—	—	30 min

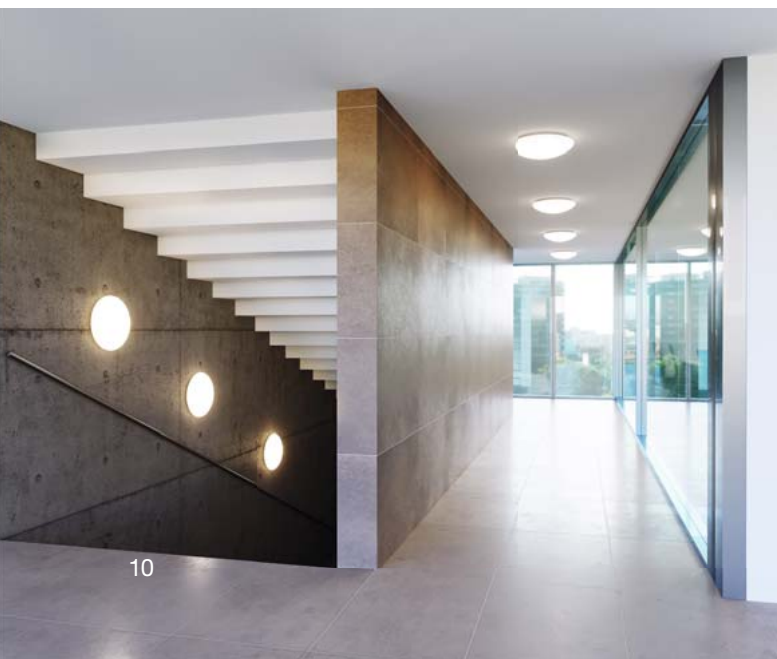
**Daylight Sensor**

7	8	9	
ON	ON	ON	2 LUX
ON	ON	—	10 LUX
—	ON	—	25 LUX
ON	—	—	50 LUX
—	—	—	Disable

OFF

ON

1	2	3	4	5	6	7	8	9
ON	ON	ON	ON	ON	ON	ON	ON	ON



<sup>1</sup> Energy savings up to XX %. Compared to luminaire with traditional technologies. The possible power loss of traditional control gear solutions is part of the calculation of the anticipated energy savings | <sup>2</sup> Replacement for usually used traditional equivalent | <sup>3</sup> t<sub>90</sub>: L70/B50 | <sup>4</sup> t<sub>80</sub>: L80/B50 | <sup>5</sup> Refer to [www.ledvance.com/guarantee](http://www.ledvance.com/guarantee) for precise conditions | <sup>6</sup> Daylight and motion sensor

# Damp Proof



SAVE **55%<sup>1</sup>** ENERGY

## Damp Proof

Product name	GTIN (EAN)	Replacement for <sup>2</sup>	lm	lm/W		L70 <sup>3</sup>	L80 <sup>4</sup>	Dimensions L x W x H [mm]	No. Graphic
<b>Damp Proof LED</b>									
Damp Proof LED 1200 21W/4000K IP65	4058075000902	1 x 36W	2,400	115	180°	50,000 h	35,000 h	1,200 x 95 x 78	01
Damp Proof LED 1200 39W/4000K IP65	4058075000926	2 x 36W	4,400	115	180°	50,000 h	35,000 h	1,200 x 95 x 78	01
Damp Proof LED 1200 39W/6500K IP65	4058075000865	2 x 36W	4,400	115	180°	50,000 h	35,000 h	1,200 x 95 x 78	01
Damp Proof LED 1500 30W/4000K IP65	4058075000940	1 x 58W	3,500	115	180°	50,000 h	35,000 h	1,500 x 95 x 78	01
Damp Proof LED 1500 55W/4000K IP65	4058075000964	2 x 58W	6,400	115	180°	50,000 h	35,000 h	1,500 x 95 x 78	01
Damp Proof LED 1500 55W/6500K IP65	4058075000889	2 x 58W	6,400	115	180°	50,000 h	35,000 h	1,500 x 95 x 78	01
<b>Damp Proof Housing for T8 LED lamps</b>									
Damp Proof 1500 1xLamp Housing IP65	4058075000988	—	—	—	—	—	—	1,565 x 72 x 86	02
Damp Proof 1500 2xLamp Housing IP65	4058075001008	—	—	—	—	—	—	1,565 x 115 x 86	03

## Recommended T8 LED lamps:

### OSRAM SubstiTUBE® T8 Advanced UO EM

ST8AU-1.5m-22.5W-830-EM | GTIN (EAN): 4058075818330

ST8AU-1.5m-22.5W-840-EM | GTIN (EAN): 4058075818354

ST8AU-1.5m-22.5W-865-EM | GTIN (EAN): 4058075818378

### OSRAM SubstiTUBE® T8 Advanced EM

ST8A-1.5m-20.6W-840-EM | GTIN (EAN): 4058075818170

ST8A-1.5m-20.6W-865-EM | GTIN (EAN): 4058075818194

More information: [ledvance.com/substitube](http://ledvance.com/substitube)



<sup>1</sup> Energy savings up to XX%. Compared to luminaire with traditional technologies. The possible power loss of traditional control gear solutions is part of the calculation of the anticipated energy savings | <sup>2</sup> Replacement for usually used traditional equivalent | <sup>3</sup> t<sub>90</sub>: L70/B50 | <sup>4</sup> t<sub>90</sub>: L80/B50 | <sup>5</sup> Refer to [www.ledvance.com/guarantee](http://www.ledvance.com/guarantee) for precise conditions

# High Bay



## High Bay (incl. 1.5 m connection cable)

SAVE 50%<sup>1</sup> ENERGY

Product name	GTIN (EAN)	Replacement for <sup>2</sup>	lm	lm/W		L70 <sup>3</sup>	L80 <sup>4</sup>	Dimensions Ø x H [mm]	No. Graphic
High Bay LED 120W/4000K 100-240V IP65	4058075001039	250 W	13,000	110	90°	50,000 h	35,000 h	295 x 141	01
<b>NEW</b> High Bay LED 120W/6500K 100-240V IP65	4058075811041	250 W	13,500	115	90°	50,000 h	35,000 h	295 x 141	01
High Bay LED 200W/4000K 100-240V IP65	4058075001053	400 W	22,000	110	70°	50,000 h	35,000 h	380 x 159	01
<b>NEW</b> High Bay LED 200W/6500K 100-240V IP65	4058075811058	400 W	23,000	120	70°	50,000 h	35,000 h	380 x 159	01
<b>NEW</b> High Bay LED 250W/4000K 100-240V IP65	4058075814776	500 W	30,000	120	70°	50,000 h	35,000 h	452 x 160	01
<b>NEW</b> High Bay LED 250W/6500K 100-240V IP65	4058075814783	500 W	30,000	120	70°	50,000 h	35,000 h	452 x 160	01



<sup>1</sup> Energy savings up to XX%. Compared to luminaire with traditional technologies. The possible power loss of traditional control gear solutions is part of the calculation of the anticipated energy savings | <sup>2</sup> Replacement for usually used traditional equivalent | <sup>3</sup> t<sub>90</sub>: L70/B50 | <sup>4</sup> t<sub>80</sub>: L80/B50 | <sup>5</sup> Refer to [www.ledvance.com/guarantee](http://www.ledvance.com/guarantee) for precise conditions

# Floodlight



## Floodlight (incl. 1 m connection cable)

SAVE 90%<sup>1</sup> ENERGY

Product name	GTIN (EAN)	Replacement for <sup>2</sup>	lm	lm/W		L70 <sup>3</sup>	L80 <sup>4</sup>	Dimensions L x W x H [mm]	Sensor <sup>6</sup>	No. Graphic
<b>Floodlight</b>										
<b>NEW</b> Floodlight LED 10W/3000K White IP65	4058075810938	80W	800	80	100°	50,000 h	30,000 h	117 x 127 x 39		01
<b>NEW</b> Floodlight LED 10W/4000K White IP65	4058075810952	80W	800	80	100°	50,000 h	30,000 h	117 x 127 x 39		01
Floodlight LED 20W/3000K White IP65	4058075001084	160W	2,000	100	100°	50,000 h	30,000 h	155 x 167 x 44		—
Floodlight LED 20W/3000K Black IP65	4058075001060	160W	2,000	100	100°	50,000 h	30,000 h	155 x 167 x 44		02
<b>NEW</b> Floodlight LED 20W/4000K Black IP65	4058075810976	160W	2,000	100	100°	50,000 h	30,000 h	155 x 167 x 44		02
Floodlight LED 50W/3000K White IP65	4058075001145	400W	5,000	100	100°	50,000 h	30,000 h	187 x 216 x 62		03
Floodlight LED 50W/3000K Black IP65	4058075001107	400W	5,000	100	100°	50,000 h	30,000 h	187 x 216 x 62		—
<b>NEW</b> Floodlight LED 50W/4000K Black IP65	4058075810990	400W	5,000	100	100°	50,000 h	30,000 h	187 x 216 x 62		—
Floodlight LED 100W/4000K Black IP65	4058075001138	750W	10,000	100	100°	50,000 h	40,000 h	253 x 243 x 93		06
<b>NEW</b> Floodlight LED 100W/6500K Black IP65	4058075811010	750W	10,000	100	100°	50,000 h	40,000 h	253 x 243 x 93		06
Floodlight LED 150W/4000K Black IP65	4058075001176	1,000W	15,000	100	100°	50,000 h	40,000 h	298 x 269 x 128		06
<b>NEW</b> Floodlight LED 150W/6500K Black IP65	4058075811027	1,000W	15,000	100	100°	50,000 h	40,000 h	298 x 269 x 128		06
Floodlight LED 200W/4000K Black IP65	4058075001190	1,500W	20,000	100	100°	50,000 h	40,000 h	362 x 328 x 125		06
<b>NEW</b> Floodlight LED 200W/6500K Black IP65	4058075811034	1,500W	20,000	100	100°	50,000 h	40,000 h	362 x 328 x 125		06
<b>Floodlight Sensor</b>										
<b>NEW</b> Floodlight LED 20W/3000K BK S IP65	4058075814677	160W	1,900	95	100°	50,000 h	30,000 h	224 x 167 x 44	✓	04
<b>NEW</b> Floodlight LED 20W/4000K BK S IP65	4058075814691	160W	1,900	95	100°	50,000 h	30,000 h	224 x 167 x 44	✓	04
<b>NEW</b> Floodlight LED 50W/3000K BK S IP65	4058075814714	400W	4,750	95	100°	50,000 h	30,000 h	251 x 216 x 62	✓	05
<b>NEW</b> Floodlight LED 50W/4000K BK S IP65	4058075814738	400W	4,750	95	100°	50,000 h	30,000 h	251 x 216 x 62	✓	05
<b>Floodlight Asymmetrical</b>										
<b>NEW</b> Flood LED Asym 150W/4000K BK IP65	4058075814752	1,000W	15,000	100	38° x 80°	50,000 h	40,000 h	402 x 303 x 64		07
<b>NEW</b> Flood LED Asym 200W/4000K BK IP65	4058075814769	1,500W	20,000	100	38° x 80°	50,000 h	40,000 h	402 x 303 x 64		07

<sup>1</sup> Energy savings up to XX%. Compared to luminaire with traditional technologies. The possible power loss of traditional control gear solutions is part of the calculation of the anticipated energy savings | <sup>2</sup> Replacement for usually used traditional equivalent | <sup>3</sup> t<sub>90</sub>: L70/B50 | <sup>4</sup> t<sub>80</sub>: L80/B50 | <sup>5</sup> Refer to www.ledvance.com/guarantee for precise conditions | <sup>6</sup> Daylight and motion sensor



# DALI Luminaires

- Easy installation – OTi DALI ECG with fast connector included
- For new and existing DALI installations
- Additional energy savings through DALI operation possible
- Same standard as normal LEDVANCE luminaires



DALI



DALI

## Downlight

Product name	GTIN (EAN)	Replacement for <sup>1</sup>	lm	lm/W		L70 <sup>2</sup>	L80 <sup>3</sup>	Dimensions Ø × H [mm]	Cut out [mm]	No. Graphic
<b>NEW</b> DL LED DALI 25W/3000K 230V IP20	4058075042032	2 × 26W	2,220	90	100°	50,000 h	40,000 h	220 × 67	200	01
<b>NEW</b> DL LED DALI 25W/4000K 230V IP20	4058075042056	2 × 26W	2,340	95	100°	50,000 h	40,000 h	220 × 67	200	01
<b>NEW</b> DL LED DALI 25W/6500K 230V IP20	4058075042070	2 × 26W	2,440	100	100°	50,000 h	40,000 h	220 × 67	200	01
<b>NEW</b> DL LED DALI 35W/3000K 230V IP20	4058075042094	2 × 42W	3,150	90	100°	50,000 h	40,000 h	220 × 67	200	01
<b>NEW</b> DL LED DALI 35W/4000K 230V IP20	4058075042117	2 × 42W	3,325	95	100°	50,000 h	40,000 h	220 × 67	200	01
<b>NEW</b> DL LED DALI 35W/6500K 230V IP20	4058075042131	2 × 42W	3,500	100	100°	50,000 h	40,000 h	220 × 67	200	01

## Spot

Product name	GTIN (EAN)	Replacement for <sup>1</sup>	lm	lm/W		L70 <sup>2</sup>	L80 <sup>3</sup>	Dimensions Ø × H [mm]	Cut out [mm]	No. Graphic
<b>NEW</b> Spot LED DALI adjust 8W/3000K IP20	4058075042155	75W	660	85	36°	50,000 h	40,000 h	90 × 47	83	02
<b>NEW</b> Spot LED DALI adjust 8W/4000K IP20	4058075042179	75W	720	90	36°	50,000 h	40,000 h	90 × 47	83	02

## Panel

Product name	GTIN (EAN)	Replacement for <sup>1</sup>	lm	lm/W		L70 <sup>2</sup>	L80 <sup>3</sup>	Dimensions L × W × H [mm]	No. Graphic
<b>Panel 600</b>									
<b>NEW</b> Panel DALI 600 40W/3000K 230V	4058075041776	4 × 18 W/4 × 14 W	4,000	100	120°	50,000 h	40,000 h	595 × 595 × 10.5	03
<b>NEW</b> Panel DALI 600 40W/4000K 230V	4058075041790	4 × 18 W/4 × 14 W	4,000	100	120°	50,000 h	40,000 h	595 × 595 × 10.5	03
<b>NEW</b> Panel DALI 600 40W/6500K 230V	4058075041813	4 × 18 W/4 × 14 W	4,000	100	120°	50,000 h	40,000 h	595 × 595 × 10.5	03
<b>NEW</b> Panel DALI 600 33W/3000K 230V UGR<19	4058075041837	4 × 18 W/4 × 14 W	3,100	95	90°	50,000 h	40,000 h	595 × 595 × 10.5	03
<b>NEW</b> Panel DALI 600 33W/4000K 230V UGR<19	4058075041851	4 × 18 W/4 × 14 W	3,600	110	90°	50,000 h	40,000 h	595 × 595 × 10.5	03
<b>Panel 625</b>									
<b>NEW</b> Panel DALI 625 40W/3000K 230V	4058075041875	4 × 18 W/4 × 14 W	4,000	100	120°	50,000 h	40,000 h	620 × 620 × 10.5	03
<b>NEW</b> Panel DALI 625 40W/4000K 230V	4058075041899	4 × 18 W/4 × 14 W	4,000	100	120°	50,000 h	40,000 h	620 × 620 × 10.5	03
<b>NEW</b> Panel DALI 625 33W/3000K 230V UGR<19	4058075041912	4 × 18 W/4 × 14 W	3,100	95	90°	50,000 h	40,000 h	620 × 620 × 10.5	03
<b>NEW</b> Panel DALI 625 33W/4000K 230V UGR<19	4058075041936	4 × 18 W/4 × 14 W	3,600	110	90°	50,000 h	40,000 h	620 × 620 × 10.5	03
<b>Panel 1200 × 300</b>									
<b>NEW</b> Panel DALI 1200 40W/3000K 230V	4058075042018	2 × 36 W/2 × 28 W	4,000	100	120°	50,000 h	40,000 h	1,195 × 295 × 10.5	04
<b>NEW</b> Panel DALI 1200 40W/4000K 230V	4058075041998	2 × 36 W/2 × 28 W	4,000	100	120°	50,000 h	40,000 h	1,195 × 295 × 10.5	04
<b>NEW</b> Panel DALI 1200 33W/3000K 230V UGR<19	4058075041950	2 × 36 W/2 × 28 W	3,100	95	90°	50,000 h	40,000 h	1,195 × 295 × 10.5	04
<b>NEW</b> Panel DALI 1200 33W/4000K 230V UGR<19	4058075041974	2 × 36 W/2 × 28 W	3,300	100	90°	50,000 h	40,000 h	1,195 × 295 × 10.5	04
<b>Panel Accessories</b>									
<b>NEW</b> Panel 600 Surface Mount Kit	4058075813816							600.5 × 600.5 × 56	–
<b>NEW</b> Panel 625 Surface Mount Kit	4058075813830							625.5 × 625.5 × 56	–
<b>NEW</b> Panel 1200 Surface Mount Kit	4058075813854							1,200.5 × 300.5 × 56	–
<b>NEW</b> Panel Mounting Clips 2x4	4058075811089							45 × 35 × 30	–
<b>NEW</b> Panel 600/625 Suspension Kit	4058075800106							3,000	–
<b>NEW</b> Panel 1200 Suspension Kit	4058075027817							3,000	–

<sup>1</sup> Replacement for usually used traditional equivalent | <sup>2</sup> t<sub>90</sub>: L70/B50 |  
<sup>3</sup> t<sub>80</sub>: L80/B50 | <sup>4</sup> Refer to [www.ledvance.com/guarantee](http://www.ledvance.com/guarantee) for precise conditions

# Vertical Application Management (VAM) – application specific lighting solutions from LEDVANCE



Facility Management



Hospitality



Industry



Shop



Healthcare



Outdoor



Transportation

LEDVANCE wants to be more than just your supplier, we also want to be your lighting partner. To be able to support you in an even more targeted and customer-driven manner, we have further expanded our successful vertical application management structure. Let us inspire and inform you!

### **Seven verticals for industry-specific consulting**

We have re-aligned ourselves with seven different verticals. Our vertical application managers coordinate support for your properties throughout Europe or around the globe, or support you in developing your own personally tailored concepts.

We can show you how to drive down the costs of your lighting systems and improve light quality. We can perfectly plan and realize your lighting projects for you and together with you. And, thanks to a widely branching network as well as intensive exchanges with our customers, we can even identify trends and developments early on. This means we can also help shape your requirements from the outset and fulfill these in a targeted way.

**The new LEDVANCE LED luminaires deliver ideal solutions for these main areas of application. You will find additional information and consultation appointments at: [www.ledvance.com/vam](http://www.ledvance.com/vam)**

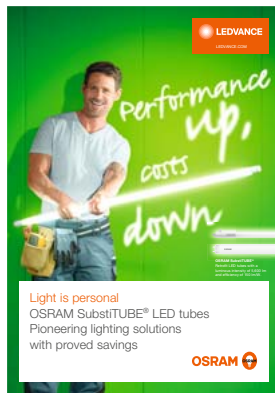


With almost 9,000 employees and active in more than 120 countries, LEDVANCE is one of the world's leading general lighting providers for professional users and retail customers. Emerged from the general lighting business of OSRAM GmbH, the company offers advanced LED lamps, standardized LED luminaires, intelligent, networked Smart Home and Building solutions, and traditional light sources.



LEDVANCE GmbH  
Parkring 33  
85748 Garching  
Germany

You will find lots of additional brochures and product information on our lamps and luminaires at: [LEDVANCE.COM/download](http://LEDVANCE.COM/download)



LEDVANCE is the licensee of product trademark OSRAM in general lighting



VISIT [LEDVANCE.COM](http://LEDVANCE.COM)